



## INTELLIGENT TRANSMITTER WITH DIGITAL INDICATION

## LEO 3

RS485-BUS-INTERFACE / SCALABLE 4...20 mA OUTPUT

LEO 3 is a micro-processor based transmitter with digital double-display for pressure (top of display) and for the analog output signal (bottom display). The display is powered from the 4...20 mA current loop.

The following functions can be executed with the front keys:

- MAX/MIN** Activating the right key brings the Max.- and Min.-values to the lower display.
- RESET** With RESET, the Max.- and Min.-values are set to actual.
- ZERO SET** The zero is set to the applied pressure.
- ZERO RES** Factory zero setting will be restored.
- UNITS** The pressure values can be displayed in the following units: bar, mbar/hPa, kPa, MPa, PSI, kp/cm<sup>2</sup>.

### Programming the analog output via the front keys

- OUTP SETT** In this sub-menu the analog output can be configured within the pressure range.
- ZERO** Executing ZERO when pressure is applied sets the analog output to 4 mA.
- FS** Executing FS when pressure is applied sets the analog output to 20 mA.
- FACT SETT** The analog output signal is set back to factory settings.

### Scope of delivery

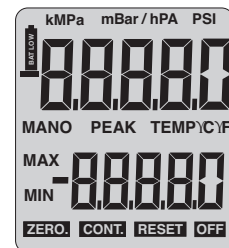
Cable plug for Binder 723

### Optional accessories

Protective rubber covering, K114-B interface converter

### PC-Software

Pressure and temperature readings can be displayed and recorded on PC or Laptop with help of the software ControlCenterSeries30 (CCS30) and a serial interface cable. The software also enables configuration of the analog output scaling and zero point settings. The Keller-Bus protocol and programming examples in various programming languages are available. This allows very quick and easy implementation in customer software applications. Up to 128 devices can be connected together into a KELLER Bus-system.



Display segments LEO 3

### SPECIFICATIONS

Pressure Ranges rel. PR	-1...3	-1...10	-1...30						bar				
Pressure Ranges abs. PA								0...30	0...100	0...300	0...700	0...1000	bar
PAA	0...4	0...10	0...30									bar	
Overpressure	8	20	60	200	600	1100	1100			bar			
Resolution Pressure Display (LCD)	1	2	10	20	100	200	200			mbar			
Resolution Pressure via Interface	0,0125 %FS												
Accuracy RT (room temperature) **	≤ 0,1 %FS												
Total Error Band (0...50 °C)	≤ 0,2 %FS												
Storage Temperature / Operating temperature	-10...60 °C / 0...50 °C												
Compensated Temperature Range *	0...50 °C												
Supply	8...28 VDC												
Output	4...20 mA (2 wire) / RS 485												
Interface	RS 485 (KELLER-Bus)												
Measuring Rate	up to 90 times/sec.												
Display Rate	2 times/sec.												
Pressure Connection *	G1/4"												
Electrical Connection *	Binder 723 (back entry)												
Protection	IP65												
Diameter x Height x Depth / Weight	76 x 125 x 50 mm / ≈ 210 g												

\*Options: others Pressure Ranges, Temperature Ranges, Pressure Connections, Electrical Connections \*\*Includes Linearity + Repeatability + Hysteresis

### Pin assignment

Output	Function	Binder 723
4...20 mA (2 wire)	OUT /GND	1
	+Vcc	3
Interface	RS485A	4
	RS485B	5
⏏	Shielding	Housing

